

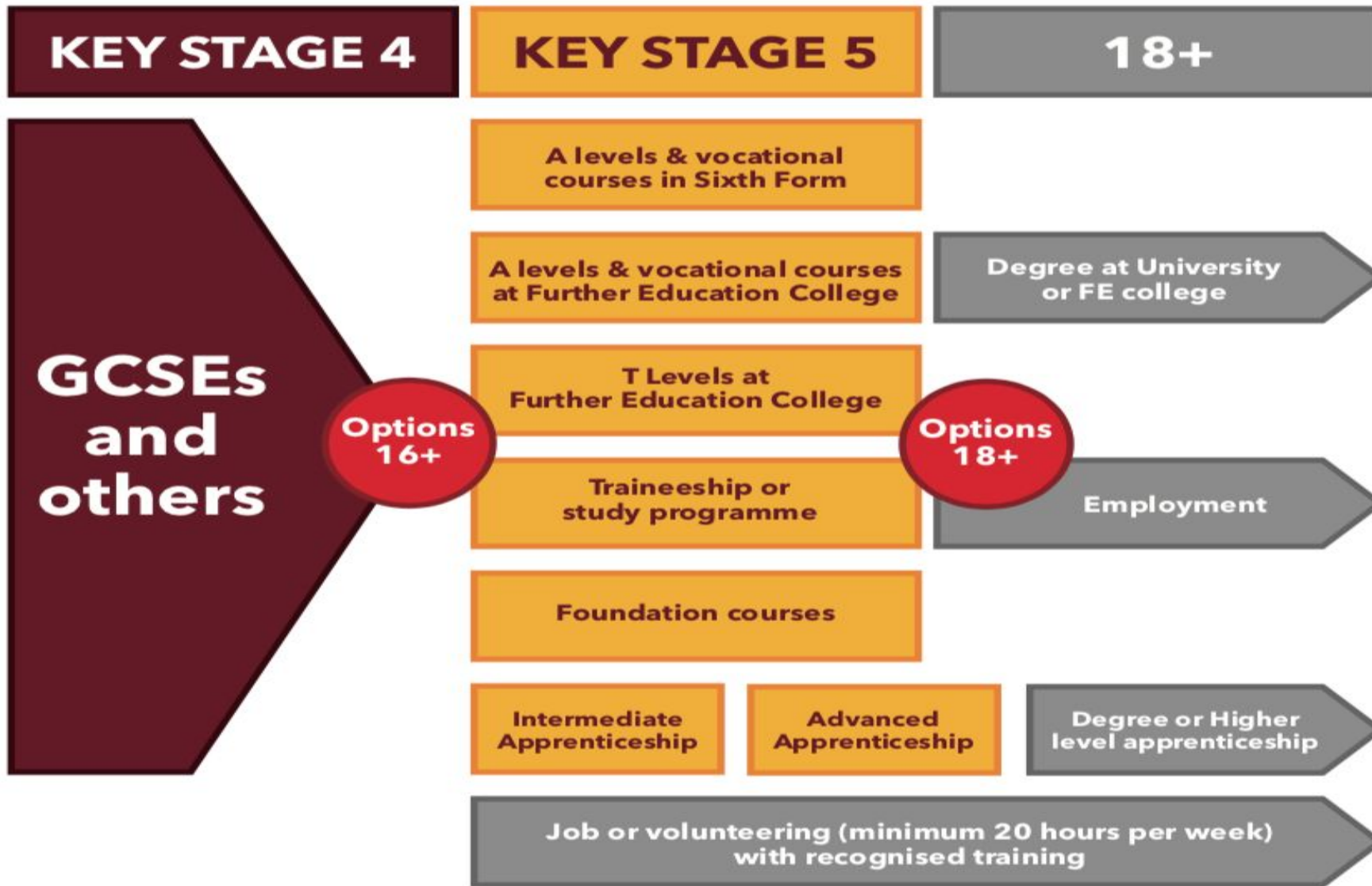


JMF6
ABINGDON

Welcome









Why choose to study here?

Familiar

Different

A Level courses

Pastoral support

Supra-curricular offer

Facilities



A Broad Level 3 curriculum

Fine Art
Graphics
Textiles
Economics
Geography
Product Design
Criminology
Sociology
Psychology
Politics
History
Philosophy
Mathematics
Further Maths
Core Maths

Biology
Chemistry
Physics
Media
English Literature
French
German
Spanish
Physical Education
Music
Drama
Computer Science
Business

GCSE Maths & English



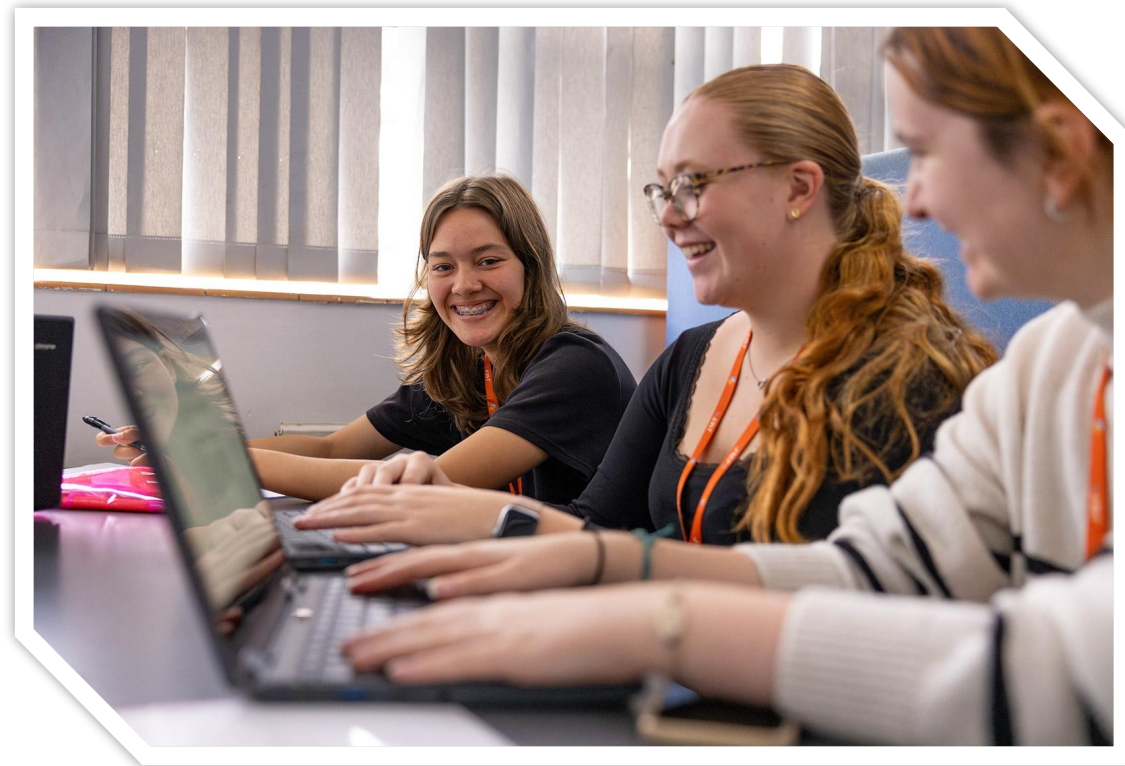
DESTINATIONS

& current students



Current JMF6 Cohort

- 258 students
- John Mason
- Fitzharrys
- Other schools



Destinations – August 2024



University	Apprenticeship	Art Foundation	Other (Gap year, employment)	Year 14
88	8	4	31	1



Our Students

Ruth

Bella

(& Rory)



Our best advertisement



JMF6
ABINGDON

Diverse pathways

Maths at University of Oxford

Engineering at University of Cambridge

History & Spanish at University of Bristol

Law at University of Exeter

Art foundation at Oxford Brookes University

Sport business & law at UBFC

Theatre & performance at University of Warwick

Chemistry at University of Birmingham

BMW Apprenticeship

Harwell RAL Project Management
Apprenticeship

Glaxo-Smithkline Biochem Apprenticeship

Mott McDonald Civil Engineering
Apprenticeship

Lifeguard - Australia

Police Apprenticeship





ACADEMIC SUCCESS

Target Setting

Minimum A level grade expectation

Approx GCSE grades	GCSE score band	QCA score band	Target grade aspiration	Minimum exp grades (exc Gen St) taking 3 or 4 A levels	Subjects to be taken (exc gen St)
	7.5-8.0	55.0-58.0	A*/A	A*AAA	4
	7.0-<7.5	52.0-<55.0	A	AAA	3/4
	6.7-<7.0	50.2-<52.0	B	ABB	3
	6.4-<6.7	48.4-<50.2	B	BBB	3
	6.1-<6.4	46.6-<48.4	B/C	BBC	3
	5.8-<6.1	44.8-<46.6	B/C	BCC	3
	5.5-<5.8	43.0-<44.8	C	CCC	3
	5.2-<5.5	41.2-<43.0	C	CCD	3
	4.7-<5.2	38.2-<41.2	C/D	CDD	3

ATTENDANCE

All day every day
Registration am and pm
A Level and enrichment/skills lessons
Study periods



Driving Lessons
Blood donation
Driving test
Work Experience

FACILITIES

and support

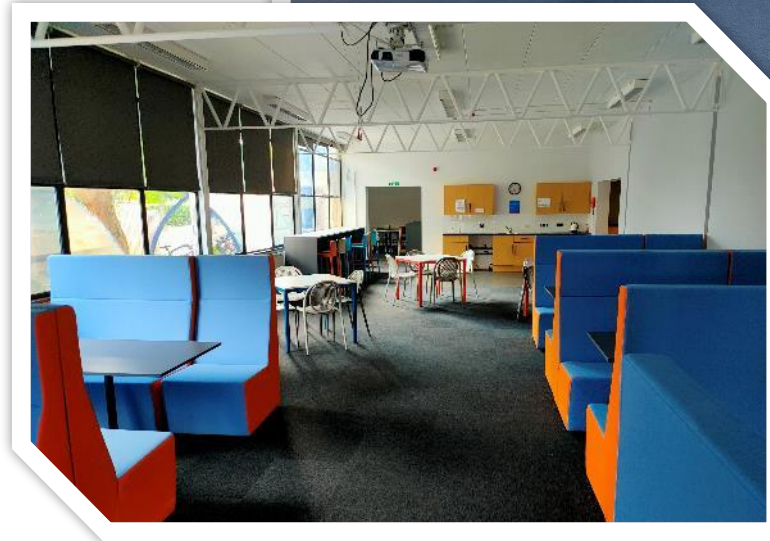


- A unique single entity, combining resources of both schools
- Shared approach to learning
- Shared approach to personal development

Facilities



- A **Study Café** at each site, with study seating capacity for a total of 166 students
- **Chromebooks** for exclusive JMF6 use for independent study
- **Administration & wellbeing** support at each site





COMMUNICATION

routes & platforms

- JMF6 – The Web-Site
- Google Classrooms
- Monthly newsletter
- Reports
- Parents' Evenings and information evenings
- UCAS/ student finance Evenings



Supra-curricular Activities

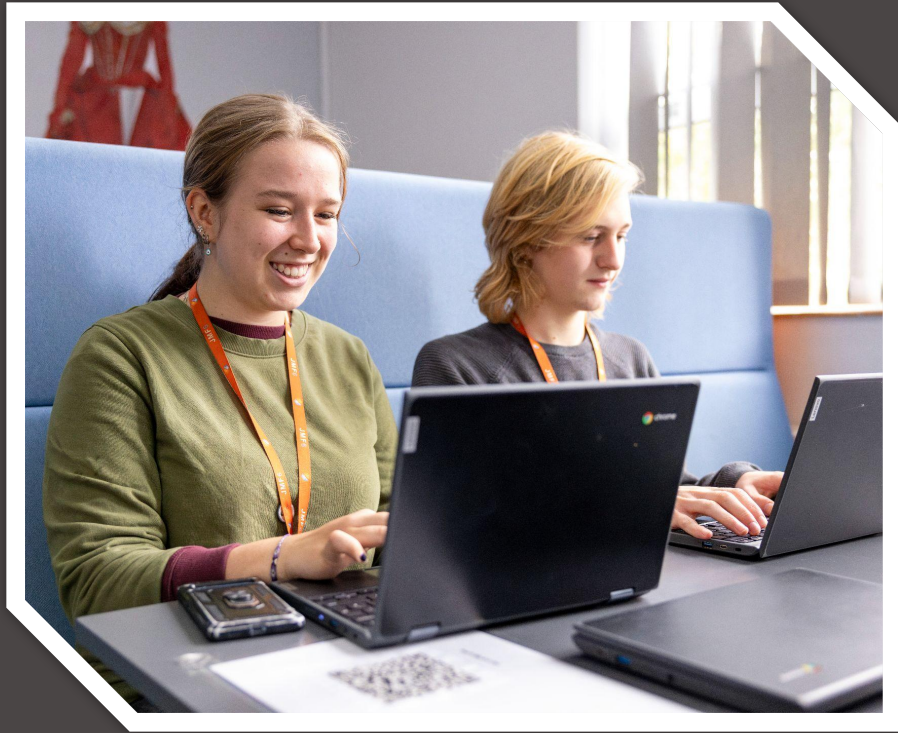




There is always something happening

Student Leadership Team
Oxbridge/ medics/vet group
Volunteering
Sports events & teams
Weekly quiz
Grown Up reading
OX14 partnership events
Summer Ball
Charity events

Model United Nations
Debate Club
Academic Tutoring
English Literature Club
Reading Group
Study Groups
Stitch & craft
Team sports
Peer Support Leads



Extended
PROJECT EPQ
Qualification



Extended Project Qualification EPQ

Valuable skills

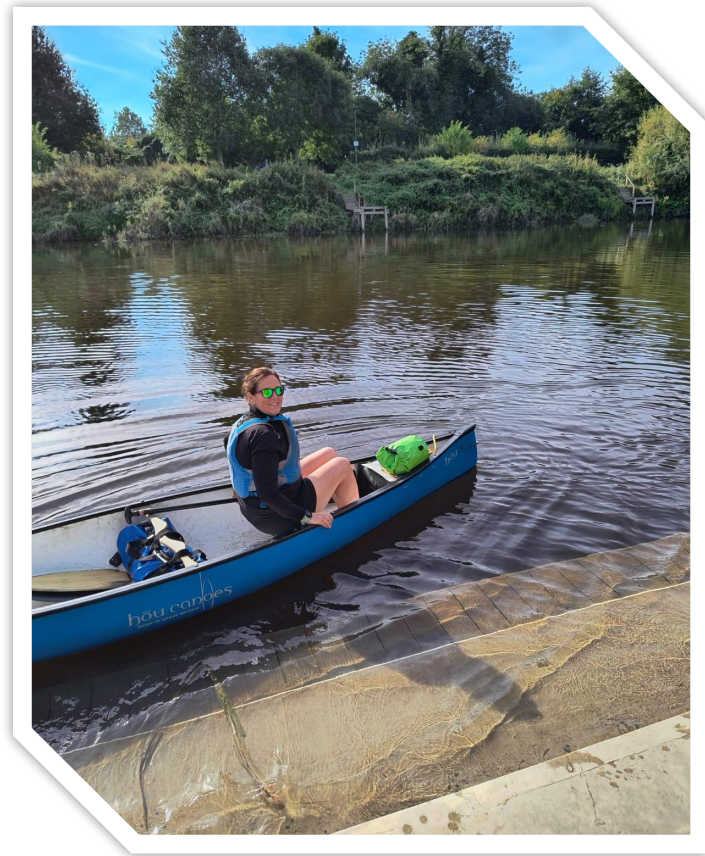
- Transferable Skills valuable for all applications
- Leads to reduced offers
- Increases chances of offer acceptance flexibility
- Pride at being an expert

Duke of Edinburgh's Award



Builds

- Resilience and self-reliance
- Sharing responsibility
- Decision making and acceptance of consequences
- Reflection on personal performance
- Confidence in unfamiliar situations
- Develop communication skills and coping mechanisms
- Show initiative
- Develop research skills
- Sense of achievement
- Learn about and appreciate community and sense of belonging





Discretionary Bursaries

These are available for students who face the greatest financial barriers to participation in education and training, such as costs of transport, food or equipment.

Further details and an application form are available on the JMF6 website



JMF6 Pathway

How many A Levels would I take?

What grades do I need to do A Levels?

How do I choose?

What if I change my mind?

Applying to join



Initial Interest forms to be returned by the 16th December (use the QR code on this presentation, or on the Prospectus).

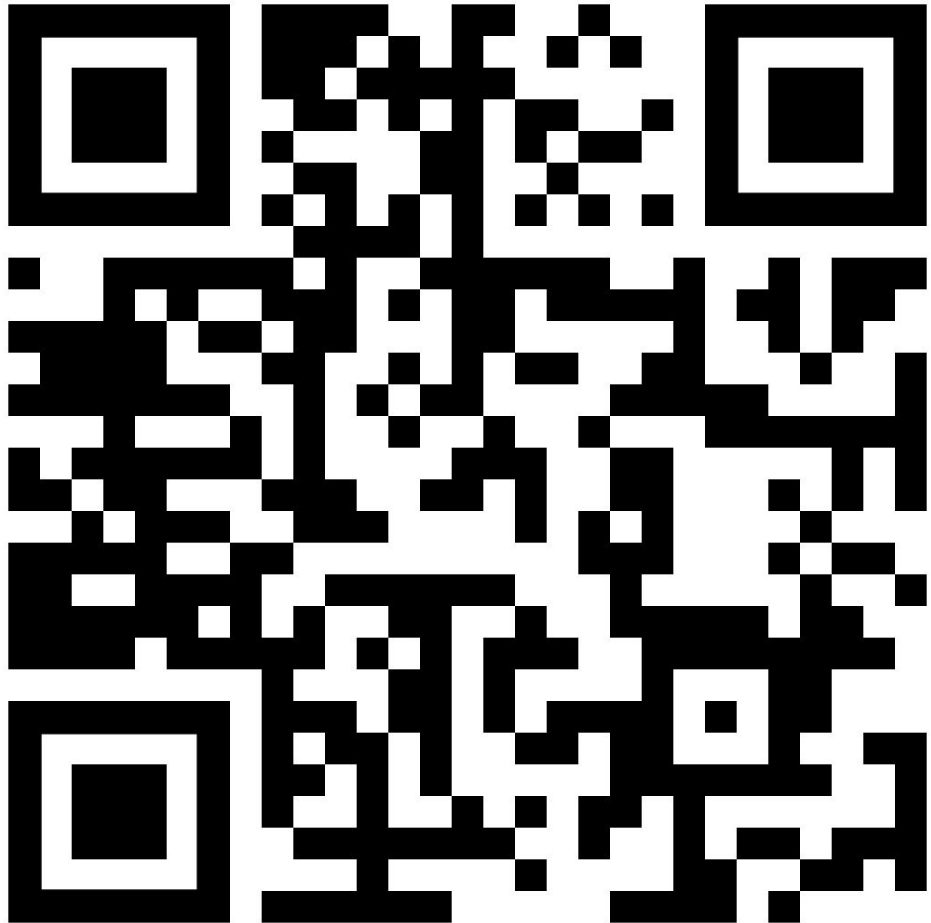
Student interviews will take place from the end of January onwards to review subject choices and future plans/aspirations.

Taster Days will take place after the GCSE exams to try out subject choices, get a feel for A Level teaching and the chance to meet fellow students. These are scheduled for 30 June-1 July 2025.

Enrolment Days happen after the GCSE results (21 August 2025).



Initial Interest QR Code



Please scan the QR code to register your interest for 2025 entry.

Deadline 16 December

Details will be used for next stage contact and an offer of application through our online platform:

appicaa